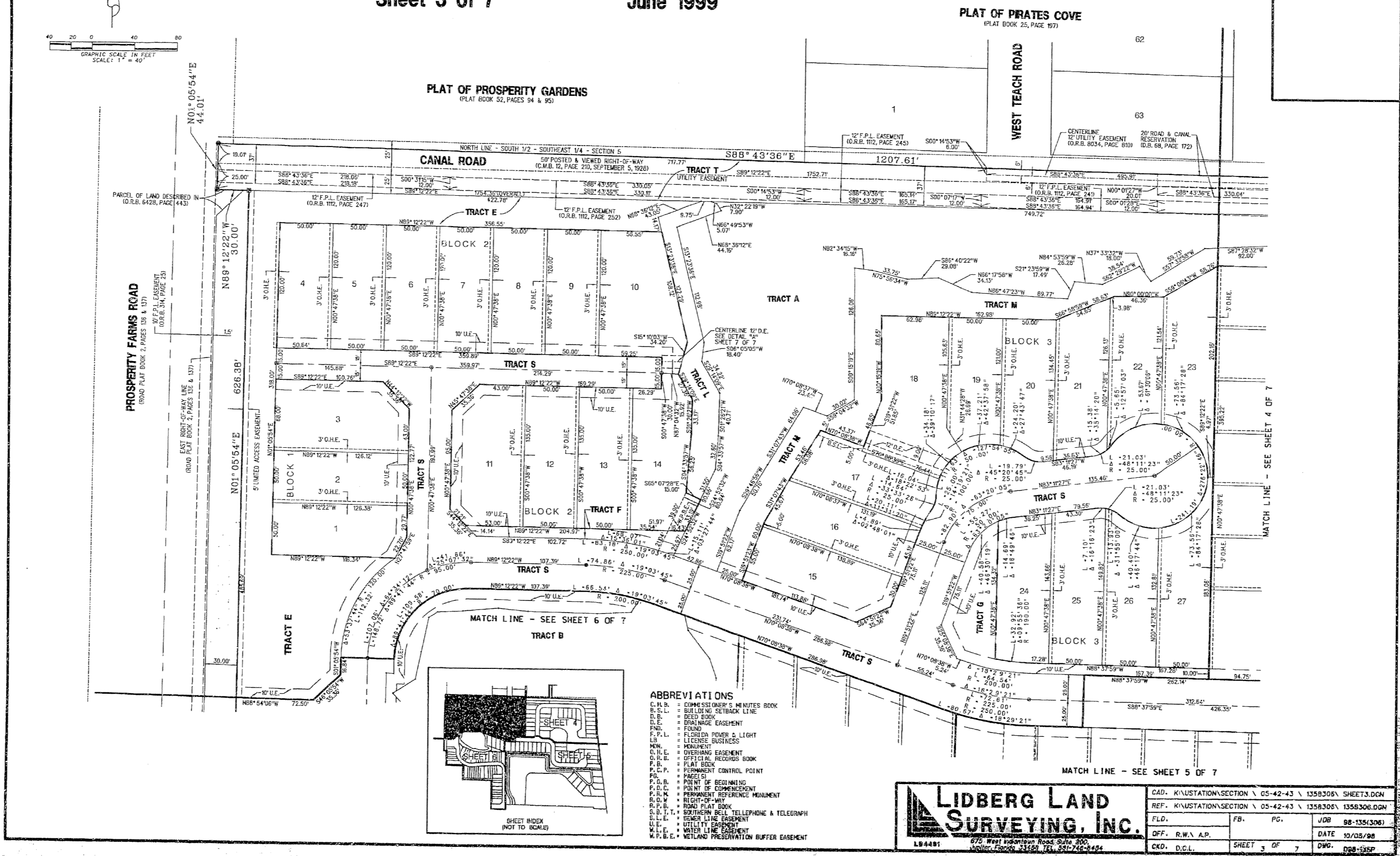


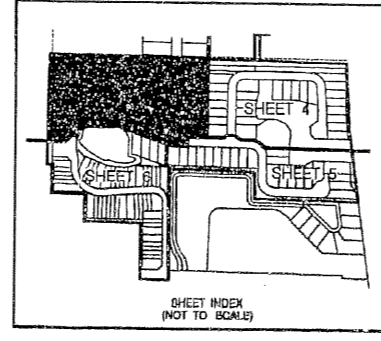
# PROSPERITY HARBOR NORTH P.U.D.

Being a portion of Section 5, Township 42 South, Range 43 East,  
Village of North Palm Beach, Palm Beach County, Florida.  
Sheet 3 of 7  
June 1999

105



- ABBREVIATIONS**
- C.M.B. = COMMISSIONER'S MAP BOOK
  - D.P.L. = DULINE SETBACK LINE
  - D.P. = DEED BOOK
  - E.E. = EASEMENT
  - F.P.L. = FLOOD PROOF LIGHT
  - L.B. = LICENSE BURSTERS
  - M.N. = MOUND
  - O.H.E. = OVERHAND EASEMENT
  - O.P.R. = OFFICIAL RECORD BOOK
  - P.C.P. = PLAT BOOK CONTROL POINT
  - P.C. = PLAT BOOK
  - P.C.P. = POINT OF BEGINNING
  - P.C.C. = POINT OF COMMENCEMENT
  - P.R.M. = PERMANENT RESIDENCE MEASUREMENT
  - R.O.W. = RIGHT-OF-WAY
  - S.P. = SPLIT PLAT BOOK
  - S.B.T. = SOUTHERN BELL TELEPHONE & TELEGRAPH
  - U.L. = UTILITY LINE EASEMENT
  - U.E. = UTILITY EASEMENT
  - W.P.B.E. = WETLAND PRESERVATION BUFFER EASEMENT



**LIDBERG LAND SURVEYING, INC.**  
675 West International Road, Suite 200,  
Boca Raton, Florida 33487-1111, 561-746-1114

CAD. K:\STAT\SECTION \ 05-42-43 \ 1358306\ SHEETS.DGN
REF. K:\STAT\SECTION \ 05-42-43 \ 1358306\ 1358306.DGN
FLD. _____ PG. _____
OFF. R.W.A.P. _____ DATE 10/08/98
CKD. D.C.L. SHEET 3 OF 7 DWG. 008-100P